

Courses & Distances

Down Juniata River

S 40 W 62

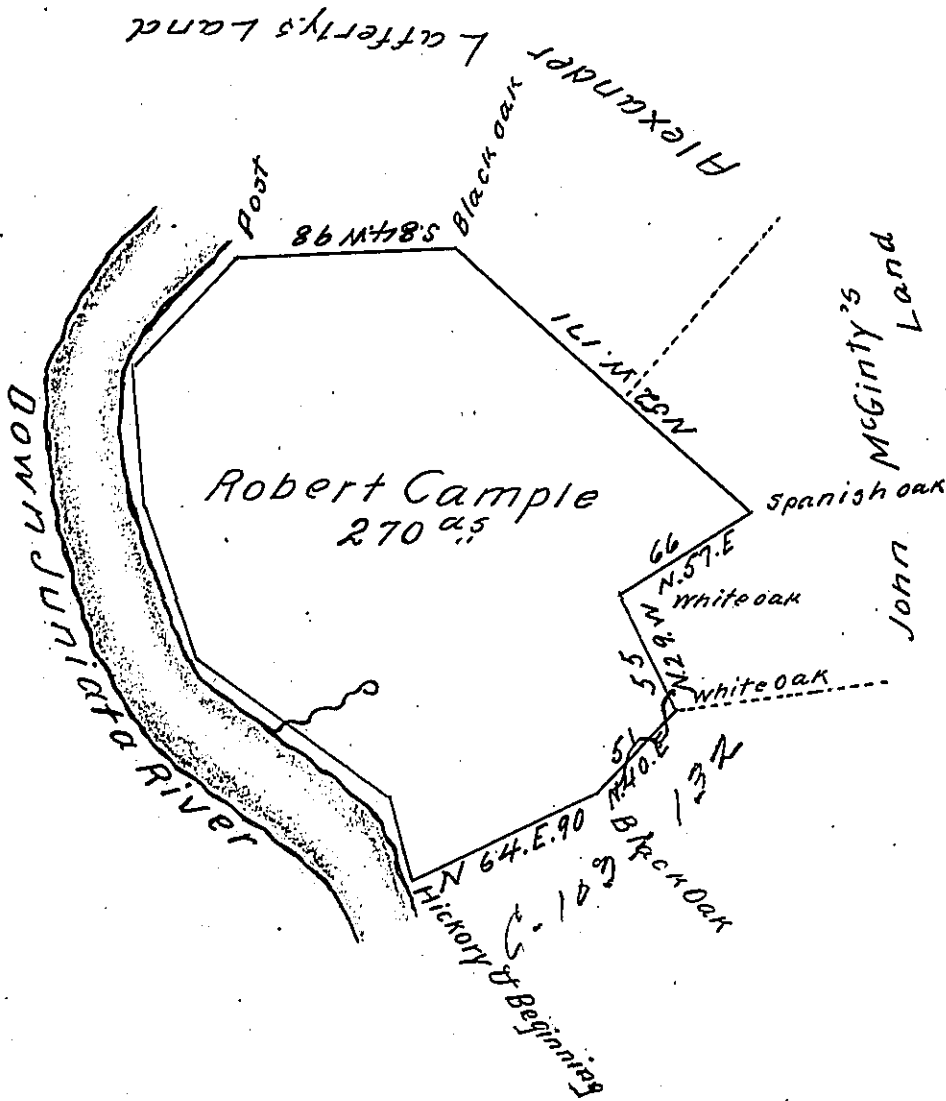
S 7 E 64

S 22 E 70

S 58 E 101

S 20 E 30

327



The Draught of a Tract of Land called \_\_\_\_\_ Situate  
 in Fermanaugh Township in Cumberland County Con-  
 taining Two Hundred and Seventy acres with the usual  
 allowance of Six Acres p Cent for Roads &c.<sup>a</sup> Resurveyed  
 the 12<sup>th</sup> Day of May 1767 according to the Old Lines made  
 by Col<sup>l</sup> John Armstrong. In Pursuance of a Warrant from  
 the Honorable the Proprietaries to Robt. Cample bearing  
 Date at Philadelphia on the 8<sup>th</sup> Day of September Anno  
 Domino 1755

p W<sup>m</sup> McClay

To John Lukens Esqr. S G  
 of Pennsylvania

IN TESTIMONY that the above is a copy of the original remaining on file in  
 the Department of Internal Affairs of Pennsylvania, made  
 conformably to an Act of Assembly approved the 16th day of  
 February, 1833, I have hereunto set my Hand and caused  
 the Seal of said Department to be affixed at Harrisburg,  
 this twenty second day of February 1904

*James P. Johnson*  
 Secretary of Internal Affairs.